



NZ Police



Deaths and Serious Injuries 2021

Fatal Crashes **30**

Speed: 9

Alcohol: 12

Drug: 14

Seatbelt: 8

Both alcohol and drug: 7

Serious Injury Crashes *

34 crashes causing **67** injuries

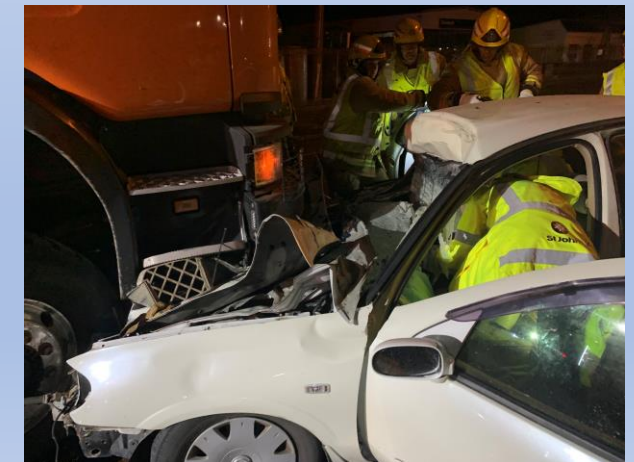
Speed: 6

Alcohol: 6

Drug: 2

Seatbelt: 6

Both alcohol and drug: 1



* Crashes with 'status 1 or 2' injuries

Deaths and Serious Injuries 2022

Fatal Crashes 3
(2 x motorcycles)

Serious Injury Crashes
9 crashes causing **17 injuries**



Draft Northland Road Policing Plan 2022

General Deterrence

- Adopt the 3-3-3 method of operation
- Implement District Road Policing days
- Execute planned weekend operations bi-monthly
- Create a safe place for learning by the wider team of Police
- RIDS focus



Specific Deterrence

- Obtain greater Intelligence in terms of risk and locations
- Align and target messaging
- Social Media
 - Manage expectations
 - Use storytelling
- Align activity with partners and link in with advertising themes



Specialised/Intensive Focus

- Assign Road Policing staff portfolios including:
 - Road workers
 - High-risk drivers
 - Restraints
 - Drug impairment
 - Alcohol impairment
 - Speed
 - Distractions
 - Locations
 - Motorcyclists /cyclists
 - Licences
 - Suspensions
 - Social media (linkage across district, insights, planning, storytelling)
- Conduct specific operations for high-risk drivers (sustainable monitoring)
- Carry out joint activities with partners on the Road Safety calendar

Partners

- Integration work with Waka Kotahi and other partners – how we collectively coordinate our activities and approach to risk
- Explore ways to work with Iwi to reduce risk to Maori
- Conduct checkpoints in collaboration with Iwi
 - education
 - prevention
 - referrals
 - enforcement
- Work with the Regional Transport Committee
 - Linkage
 - Stories
 - Accountability
- Build a ride-along programme for partners

Internal

- Create rotational NCO positions in both Areas
- Build on Senior leadership buy-in and the front-footing of messaging
- Create internal competitions between sections and teams
- Ensure line up interaction
- Weekly reporting – insights
 - Include Waka Kotahi
- Improve storytelling

